



# ARCHWAY

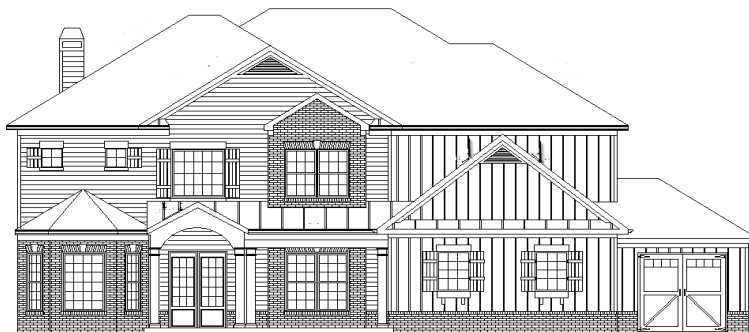
CUSTOM HOMES

## Available Homes

### Killian Manor

**Beaumont B**  
**Homesite #8**  
**Basement**  
**UNDER CONTRACT**

*Elegant 5 Bedroom, 4 Bath executive sized home with 3<sup>rd</sup> car garage. This beautiful home includes an open 2-story foyer adjoining a formal living room and dining room with butler's pantry. The foyer extends to an adjacent study/optional 5<sup>th</sup> bedroom and 4<sup>th</sup> bath. The family room with 11 foot, coffered ceiling, bayed wall of windows (with a view sure to please), opens to an oversized kitchen, breakfast and mud room with custom built-ins. Chef's Kitchen hosts a center island, granite countertops, double ovens, large walk-in pantry and an abundance of painted cabinets. The elevated Owner's suite also has a bayed wall of windows, with sitting area and tranquil bath that includes 11 foot vaulted ceilings, painted cabinets, granite tops, his and hers raised vanities, tile flooring, and a luxurious corner soaker tub. Secondary bedrooms are oversized and boast many features such as a box bay ideal for a window seat, large walk-in closet, and more. Call Dana Duncan or Kelley Crowell at 404-256-1751 for more information*



*\*Prices are subject to change without notice. Pricing at time of contract supersedes any pricing listed on marketing material. Revised on August 27, 2018*